



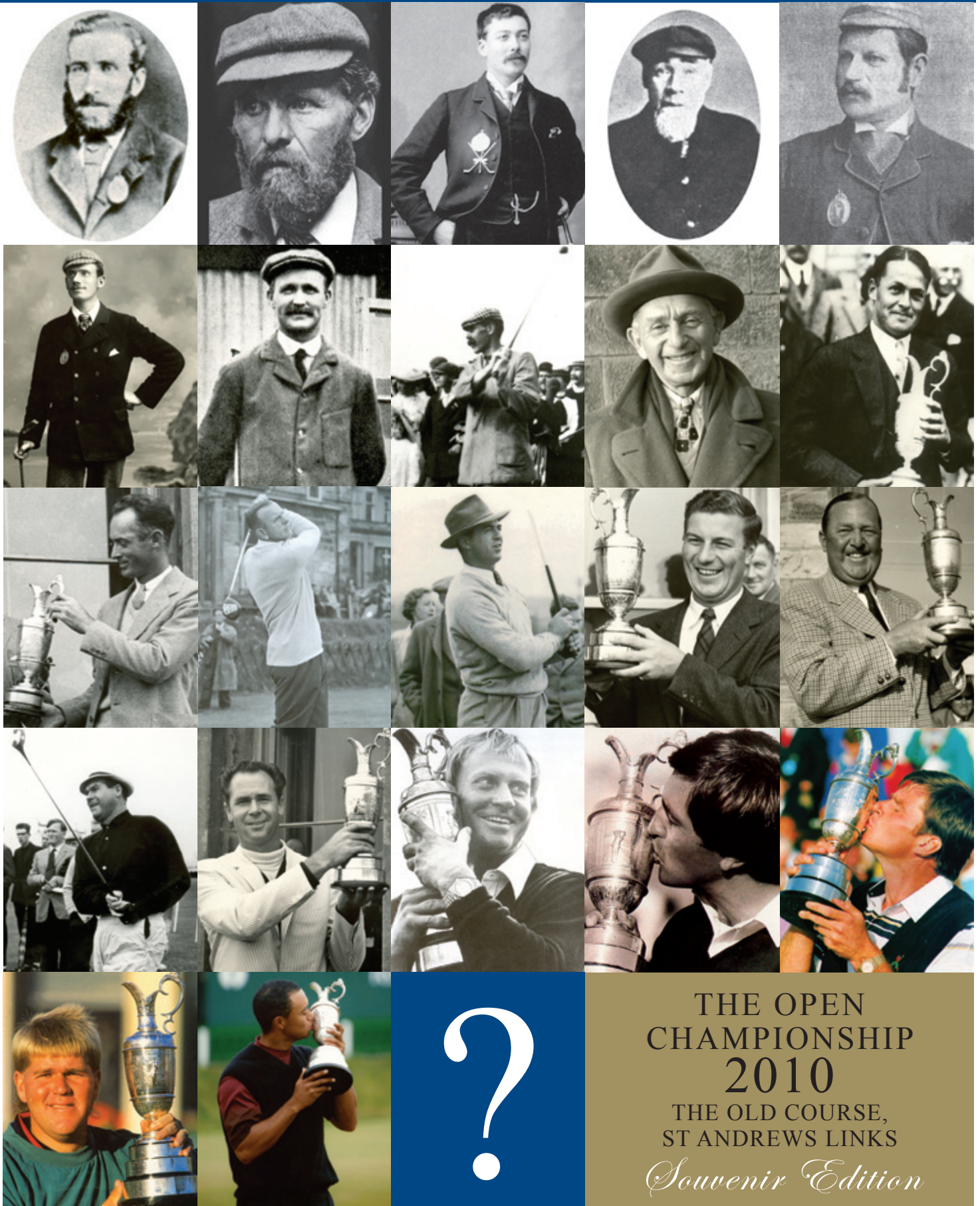
Issue 178 • July 2010

# LINKS NEWS

The Newsletter of St Andrews Links

Allianz

THE GLOBAL PARTNER  
OF ST ANDREWS LINKS



[www.standrews.org.uk](http://www.standrews.org.uk)



## Course UPDATE

### Old Course

After the Open Championship golfers expect the course to be in excellent condition so there is no let-up in the level of expectation. With the hot and dry weather continuing a lot of the time will be spent watering specific areas by hand with hoses and using the Toro Hydroject to inject water into the rootzone. Areas of rough which were grown in specifically for the Open will be cut back and returned to semi rough, or in some instances, fairway. Staff will also be busy tidying up behind the contractors as the grandstands, scoreboards and tents are removed from the site. They will turf and seed areas which have been disturbed just in time for the Alfred Dunhill Links Championship infrastructure to begin arriving.

### New and Jubilee Courses

Most of the emphasis is on course preparation, cutting and watering. There is also some tidying up to do after the Open in certain areas such as around the 1st tee and 18th where the practice ground was and tents were erected. Ragwort, a noxious yellow weed, prevalent in the rough through the late summer months has to be controlled, either by spraying or pulling. If time allows staff may make a start on building new championship tees at the 10th and 11th holes on the Jubilee.

### Eden Course

Most of the focus on the Eden will be in preparing for the Boys, Junior Ladies, Eden and Strathtyrum tournaments held over the first two weeks of August as well as a bit of repair work following the Open. Immediately after the tournaments we will be treating six of the greens on the front nine holes with a product which kills off one of the grass species in the sward. Greens 1,2,4,5,7 and 8 have a high percentage of ryegrass in them which makes it incredibly difficult to get a smooth surface on them through the spring and early summer. In preparation for this, staff overseeded these greens in mid June and again during the week of the Open. The product works over a prolonged period during which these greens may look a little yellow and a further overseeding will take place towards the end of August. The objective is to increase the smoothness of these six greens and make them more consistent with the others on the course. Golfers should see a marked improvement in 2011.

### Strathtyrum and Balgove Courses

August is a time for continual monitoring of the courses, keeping on top of growth and moisture levels. Much like the Eden Course, staff will be treating areas to eradicate ryegrass in the sward but will be focusing much more on green surrounds, carries and a couple of fairways.

### The Castle Course

The course has come through a busy period and staff have been working full-on to keep on top of growth and watering without unduly disturbing golfers. They have also been trying to eradicate ryegrass through roughs and semi roughs by spot treating areas using knapsack sprayers.

### Golf Practice Centre

As the tents and stands come down, staff will be busy seeding and turfing areas with the view to getting the range back in operation as soon as practicably possible.

# Pro tips from the Academy:

## Steve North playing from the championship tee on the 17th.

The addition of a new tee on the 17th hole on the Old Course is sure to be one of the most talked about changes on the Old Course during the Open Championship. A new tee positioned over the old railway line and on the landing area of the Golf Practice Centre will add a new dimension to the drive and certainly make the players re-assess their line off the tee.



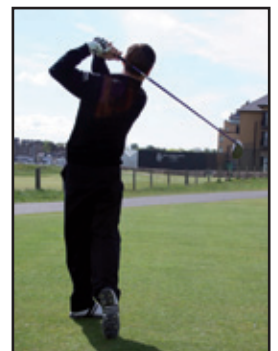
For the players there are two options, a safe line that gives them a longer second shot, or a higher risk tee shot that leaves them a much shorter second shot into the green, and from a better angle.



The safe play would be to hit your drive further to the left, (depending on length off the tee) say over the 'L' in Old, this will keep them away from the 'out of bounds' and position them on the left side of the fairway – note that the longer hitters will run the risk of running out of fairway, so they might need a 3-wood to stay on the short grass. This is without doubt the safe line, but they will find the second shot harder as they are coming in more perpendicular to the green, with a long iron, and on top of that they have brought the Road Hole bunker more into play. Chances are you will be looking to hit the front right part of the green and a two putt par.



The second option is to take the drive further right, this does bring the 'out of bounds' more into play, but it will leave a shorter shot to the green and looking more 'down the green', therefore an easier shot. This of course is very much risk / reward situation that will be influenced by the position the player is in at any particular moment – need a par, par finish for victory and I am sure you will see a conservative approach, but if it's a birdie, birdie finish you will see the bold line up the right.



One other defining factor is the wind; this always plays a major role in links golf and can influence the line the players take.



# Countdown to the 2010 Open is nearly over

**T**he countdown is nearly over for the return of the Open Championship to St Andrews Links, the Home of Golf, for the 28th time.

Golf's oldest major will celebrate its 150th anniversary as the greatest players in the game take to the Old Course to contest the famous Claret Jug.

A field of 156 players from an entry of more than 2,500 will set foot on the first tee of the Old Course on July 15 each with the hope of adding their name to the pantheon of St Andrews Links Open champions including Jones, Snead, Nicklaus, Ballesteros and Woods.

As champion on the Old Course in 2000 and 2005, Tiger Woods will be seeking to grasp the opportunity to become the first man in history to win three Opens at St Andrews Links but there will be no shortage of challengers for the American's crown.

The recently crowned US Open champion, Graeme McDowell, will be full of confidence after seeing off the challenge of Frenchman Gregory Havret as well as Woods and Phil Mickelson who finished in a tie for fourth at Pebble Beach.

Other European stars such as Lee Westwood, Pádraig Harrington, Paul Casey and Rory McIlroy will be itching to put their experience of the Old Course to good use and Ernie Els will fancy his chances after a third place finish in California.

Veteran Tom Watson will be determined to prove he can follow on from his incredible run in last year's championship at Turnberry and lay to rest the ghosts of 1984, when he lost narrowly to Seve Ballesteros in a dramatic finish.

On the eve of the championship on July 14, 26 of the 32 living Open champions will play holes one, two, 17 and 18 of the Old Course in a televised Champions' Challenge event to celebrate the 150th anniversary of the championship.

With the grandstands complete and the sea of white pavilions constructed, the stage is set for a festival of golf.

Alan McGregor, the chief executive of St Andrews Links Trust who retires at the end of this year, said, "Golf fans all over the world look forward to the Open



● The first tee of the Old Course awaits the Open Championship.

being played on the Old Course and this year has all the ingredients for another classic championship. This will be my third Open in charge at St Andrews Links and I know it will be a very special atmosphere for the thousands who come here to watch the championship in person and those who watch on television."

Gordon McKie, the course manager of the Old Course, and his team have been working hard on putting the finishing touches to the famous Links course since it closed for public play on June 19. They have been working on verti-cutting greens and topdressing them as well as brushing fairways. An extensive programme of divot filling on fairways has been carried out and final preparation work ahead of the championship will include fine tuning playing surfaces, working on green speeds, weeding areas of rough, preparing bunkers, checking and tidying up spectator routes and trimming grass in the tented village area.

To follow Gordon's work throughout the Open period read his blog at [www.standrews.org.uk](http://www.standrews.org.uk).

## Past Champions at St Andrews

(Front cover. Images: St Andrews University, DC Thomson and GM Cowie)

1	2	3	4	5
6	7	8	9	10
11	12	13	14	15
16	17	18	19	20
21	22	?		

No.	Winner	Year	Score	No.	Winner	Year	Score	No.	Winner	Year	Score
1	Tom Kidd	1873	179	9	Jock Hutchison	1921	296	17	Tony Lema	1964	279
2	Bob Martin	1876, 1885	176, 171	10	Bobby Jones	1927	285	18	Jack Nicklaus	1970, 1978	283, 281
3	Jamie Anderson	1879	169	11	Denny Shute	1933	292	19	Seve Ballesteros	1984	276
4	Bob Ferguson	1882	171	12	Dick Burton	1939	290	20	Nick Faldo	1990	270
5	Jack Burns	1888	171	13	Sam Snead	1946	290	21	John Daly	1995	282
6	Hugh Kirkaldy	1891	166	14	Peter Thomson	1955	281	22	Tiger Woods	2000, 2005	269, 274
7	J.H. Taylor	1895, 1900	322, 309	15	Bobby Locke	1957	279				
8	James Braid	1905, 1910	318, 299	16	Kel Nagle	1960	278				



## Castle Course open for play



The Castle Course is the only one of the St Andrews Links courses which will be open for play in the week of the Open from July 11-18. A small number of visitor times are still available. They can be booked online or by emailing [reservations@standrews.org.uk](mailto:reservations@standrews.org.uk) or by telephone on 0044 1334 466666.

Full details of when the other courses and the Golf Practice Centre will reopen following the Open can be found on the 2010 Open Championship information page on [www.standrews.org.uk](http://www.standrews.org.uk).

- *The multi award-winning Castle Course offers spectacular views over the town of St Andrews and out to the North Sea. The short par three 8th hole is one of five holes which hug the spectacular coastline.*

## Open 2010 merchandise on sale

Golf fans looking for special gifts and mementoes of the 150th anniversary Open Championship at the Old Course should visit The Old Course Shop, next to the 18th green, or visit the online shop at [www.standrews.org.uk](http://www.standrews.org.uk).

A wide selection of official 2010 Open merchandise bearing the Claret Jug 2010 Roundel logo and the 2010 Old Course logo is on sale from The Old Course Shop, which is open for business throughout the week of The Open from July 12 to 18. Selected items can also be purchased online or before and after the championship from the Links Clubhouse Shop and the 18th Green Shop.

Merchandise from leading brands such as Polo Ralph Lauren, Pro Quip, Bobby Jones, Fairway & Greene, Peter Millar, Sunderland and Imperial are available as well as official Open Championship pin flags.

All purchases make a contribution to the preservation and maintenance of the world famous courses at St Andrews Links, including the Old Course.



- *Open 2010 merchandise is available from the Old Course Shop.*

## Treatment of rough on the 17th hole of the Old Course

Work will be carried out to improve the consistency of the area of rough between the 17th and 2nd fairways of the Old Course following the Open Championship.

Over the years, this low lying area has become coarse and tussocky due to the grass type, Perennial Ryegrass. Because of the significant number of golf events held on the course it has been difficult to find a suitable time to carry out proper and effective management of the rough. In 2009, the Links Management Committee agreed to look at improving the consistency and make-up of the rough in this area.

Following the Open Championship in July the rough will be treated by spraying the area with a product which will remove the problematic ryegrass along with other coarse grasses and debris. This treatment may have to be repeated before the end of the growing season and golfers are likely to see a discolouration of the grass as the treatment takes hold. A decision on whether areas require to be marked as ground under repair will be taken nearer the time after assessing how things look and play.



## Young greenkeeper wins award



● Anke Perplies (left) with her friend and colleague Theresa Domann.

Anke Perplies, a young greenkeeper at The Castle Course, has won a prestigious nationally sponsored greenkeeping award. Anke, who is from near Munich in Germany, won the Toro award for the Best Overall HNC Golf Course Management Student for 2009/2010 at Elmwood College in Cupar.

“I really enjoy working at The Castle Course,” said the 26 year-old. “It is great experience for me working at St Andrews Links and it is really nice to receive this award.”

Allan Patterson, Course Manager at The Castle Course, said, “Anke has worked very hard this year and deserves a lot of credit for winning this award.”

Anke will be entered into the Toro Student Greenkeeper of the Year National Competition and will be invited to attend the Golf Industry Show in Orlando, Florida in February which is run by the Golf Course Superintendents Association of America (GCSAA) and the National Golf Course Owners Association (NGCOA).

## Annual Report 2009 available

The 2009 St Andrews Links Trust Annual Report is now available. It can be downloaded from [www.standrews.org.uk](http://www.standrews.org.uk) and hard copies are available on request.

### Course Information

#### Green Fees (to 17 October)

	Adult	Under 16
Old Course	£130	£130
The Castle Course	£120	£60
New Course	£65	£32
Jubilee Course	£65	£32
Eden Course	£40	£20
Strathtyrum Course	£25	£12
Balgove Course	£12	£4

### Tickets

Three and seven day tickets are available for all courses except the Old.

3-Day	£145 (adult)	£72 (junior)
7-Day	£290 (adult)	£145 (junior)
<i>Balgove Course only</i>		
3-Day	£21 (adult)	£6 (junior)
7-Day	£42 (adult)	£12 (junior)

### Opening Times

For full details about clubhouse opening times please contact 01334 466666.

### Equipment Hire

Steel and graphite clubs and shoes can be hired from the shops in the Clubhouses. Telephone 01334 466666.

## PLAYING THE LINKS

Starting times on all six 18 hole courses may be booked in advance but not for Saturday play, except on The Castle Course (subject to availability). Applications may be made by letter, phone, fax or email. The Reservations Office is open Monday-Friday 9am-5pm with the exception of Thursdays, when it opens at 9.30am. A minimum of two golfers should apply and pre-paid green fees are non-refundable. Tee times can also be reserved through LinksNet, the Links Trust's online booking service. Visit [www.standrews.org.uk](http://www.standrews.org.uk) for details.

### Old Course (6721 yards, par 72)

First played on around 1400 and naturally formed, the Old Course regularly hosts The Open Championship. Like all the Links courses it is public. It is open Monday-Saturday all year and the playing interval is ten minutes. The handicap limit is 24 for men and 36 for ladies and a valid certificate has to be shown to the starter. Please check in with the starter at least 20 minutes before your tee time. Visiting golfers wishing to park at the Links Clubhouse should allow 25 minutes before their tee time and take the free shuttle buggy to the starter's box beside the first tee. Single players can join in a two or three ball by approaching the starter in the first instance.

### Advance reservations

Applications will be taken on or after the first Wednesday in September for the following year. Please apply to [reservations@standrews.org.uk](mailto:reservations@standrews.org.uk).

### Ballot

Every day except Sunday a ballot or draw takes place for a number of times on the following day on the Old Course. The Saturday draw is for play on Monday. You can enter by phone (01334 466666) or in person the morning before you wish to play and the ballot is drawn after 2pm. The results are announced on [www.standrews.org.uk](http://www.standrews.org.uk)

### The Castle Course (6759 yards, par 71)

The seventh course at the Home of Golf. Spectacular views from a cliff top site. Online bookings through [www.standrews.org.uk](http://www.standrews.org.uk)

### New Course (6625 yards, par 71)

Laid out by Old Tom Morris, this course was paid for by the Royal and Ancient Golf Club and opened in 1895. It is open every day, there is no handicap limit, and the playing interval is eight minutes. The order of play is determined by arrival on the first tee. Locals have priority between 5pm and 6pm. Online bookings through [www.standrews.org.uk](http://www.standrews.org.uk)

### Jubilee Course (6742 yards, par 72)

Opened as a 12 hole course in 1897, the Jubilee was extended to 18 holes in 1905. It is the Links course nearest to the sea at St Andrews and is used regularly for championship events. It is open every day and there is no handicap limit. Tee times can be booked by phone or in person the day before play. Locals have priority between 8.00-9.30am and 1.30-2.30pm. Online bookings through [www.standrews.org.uk](http://www.standrews.org.uk)

### Eden Course (6250 yards, par 70)

Designed by Harry S Colt and opened in 1914, the Eden is one of the most popular courses on the Links. It is open every day and there is no handicap limit. Tee times can be booked by phone or in person the day before play. Online bookings through [www.standrews.org.uk](http://www.standrews.org.uk)

### Strathtyrum Course (5620 yards, par 69)

Shorter and less testing than the other courses, the Strathtyrum opened in 1993. It is ideal for high handicappers although the bunkers are cunningly placed and the greens undulating. It is open every day and there is no handicap limit. Tee times can be booked the day before play. Online bookings through [www.standrews.org.uk](http://www.standrews.org.uk)

### Balgove Course (1520 yards, par 30)

It is open every day and times cannot be booked in advance – simply turn up and play. The green fee is the same for nine or 18 holes.



## The Clubhouses



**St Andrews Links has three superb clubhouses, the Links, Eden and Castle clubhouses, which are all open to the public. With first class facilities and ample parking, the clubhouses are an excellent stop for both golfers and non-golfers.**

Experienced reception staff are available to give information on all aspects of golf in St Andrews and the rest of Fife.

The Links Clubhouse is a short buggy ride from the first tee of the Old Course and next to the first tees of the New and Jubilee Courses. It has a large and welcoming reception area, spacious locker rooms, lounge

and dining room with a bar, and an extensive shop.

The Eden Clubhouse is near the Golf Practice Centre and is ideally situated for golfers playing the Eden, Strathtyrum or Balgove Courses. There is a special room for junior golfers.

The Castle Clubhouse (above) overlooks the ninth and eighteenth greens of The Castle Course and features spectacular cliff top views.

All clubhouses offer varying menus with a choice of daily specials. Private parties and buffets for club dinners, celebrations and other special occasions are also welcome in the Links and Eden Clubhouses.

All changing rooms are spacious and well

equipped with lockers and overnight secure storage for golf clubs. Clubs can be cleaned using ultrasonic club cleaning equipment.

A wide range of golfwear, accessories and gifts branded with official St Andrews Links logos can be obtained from the Links Clubhouse shop, the shop behind the 18th green of the Old Course and The Old Course Shop beside the 18th fairway. Castle Course merchandise is available in the Castle Clubhouse. Golf clubs and shoes can also be hired from the Clubhouses.

The Links and Eden clubhouses are open all year every day except Christmas Day, the Castle Clubhouse opens until 1 November.

## About the LINKS

### Soft Spikes

Golfers are encouraged to wear shoes with plastic cleats or 'soft spikes' which do less damage than metal spikes to the greens.

### Caddies

Caddies for the six Links courses can be hired through the caddie manager (tel: 01334 466633). For The Castle Course call the caddie assistant (01334 464513). Only caddies registered with the Links Trust may be used on a professional basis and caddie availability cannot be guaranteed. Caddies are paid in cash on satisfactory completion of the round and tips are at the golfer's discretion. Caddie fee is £40.

### Trolleys

Battery powered trolleys (£12) or manually operated trolleys (£4) are available for hire from the starters and caddie pavilions. Trolleys are permitted on the Old Course between April and October after 12 noon.

### Buggies

Two person buggies or golf carts can be hired subject to availability on the New, Jubilee, Eden, Strathtyrum and Castle courses by golfers who are either senior citizens or medical certificate holders. Hire is £25 for visitors and £10 for all Links ticket holders.

### Practice Centre

- St Andrews Links Golf Academy
- Floodlit driving range.
- 22 covered and 32 open bays.
- Special area for pitching, putting and bunker practice.
- Open every day from 7am.
- Last bucket of balls dispensed at 8pm.

To find out more ☎ 01334 474489

**SINCE 1974 St Andrews Links Trust, a charitable organisation created by an Act of Parliament, has overseen the management and preservation of the Links.**

Now the largest golf complex in Europe, it is responsible for about 900 acres comprising six 18 hole golf courses and one nine hole course, two turf nurseries, three greenkeeping centres, an extensive Golf Practice Centre and Academy, three clubhouses and four shops.

All surpluses are reinvested into the maintenance of the courses and the facilities.

St Andrews Links Trust  
Pilmour House, St Andrews  
Fife KY16 9SF

All enquiries telephone: 01334 466666

Links Clubhouse Fax 01334 466664

Reservations Fax 01334 477036

Administration Fax 01334 479555

Website [www.standrews.org.uk](http://www.standrews.org.uk)

Email: [enquiries@standrews.org.uk](mailto:enquiries@standrews.org.uk)

## MAP of the LINKS

